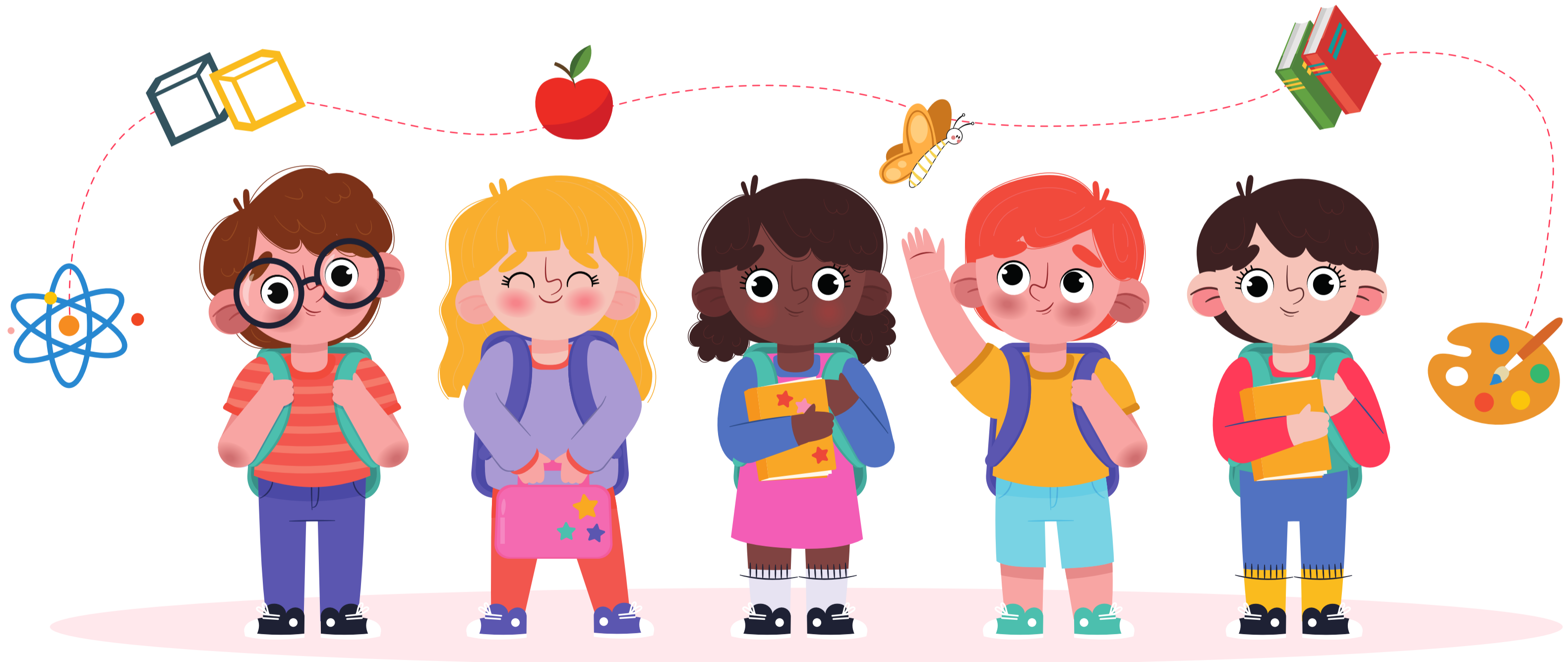


# REAL SCHOOL

**“Free the child’s potential, and you will transform him into the world”**

• Maria Montessori



# REAL SCHOOL

## Index

What Real School is <b>NOT</b> ?	01
What Real School is	02
What is Real School	03
Student Transformation at Real School	04
<b>Our Philosophy</b> – Guiding Principles	05
24X7 Schooling	06
<b>Pre-Primary School</b>	
• The Montessori Inspired	08
• Child Development Goals	09
• Curriculum	09
• Environment And Material	10
• Student Routine	11
• Online	11
• Offline	12
<b>Primary And Beyond</b>	
• Montessori And Beyond	13
• Child Development Goals	13
• Curriculum	14
• Environment And Material	14
• Student Routine	15
• Online	15
• Offline	16
<b>Meet The Team</b> Behind The Dream	17
Fee Structure	18
Admissions	19
Visit A <b>Real School</b>	19

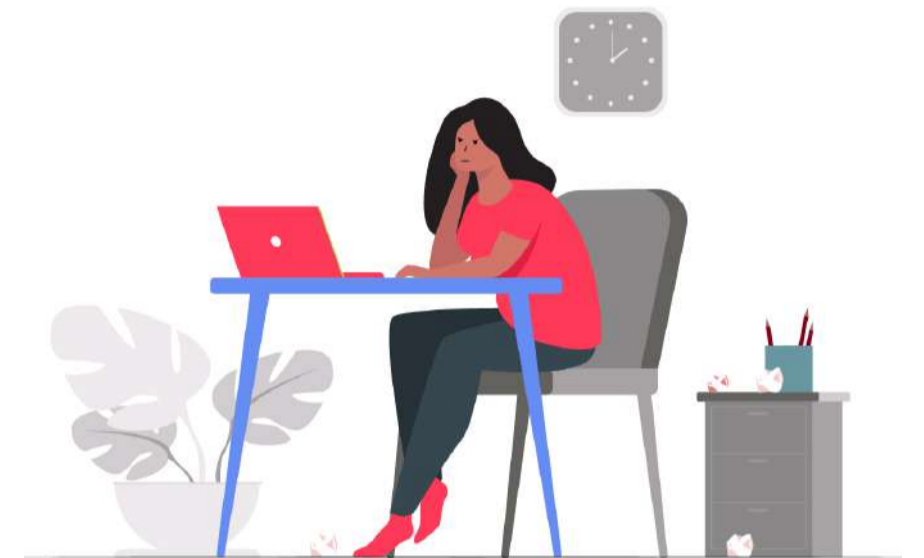
# What Real School Is NOT



A class full of 30 students



A screen full of uninterested faces



Passive learning, listening to teacher for hours



A routine loaded with exams, reports



A place of comparisons, ranks and labels

# What Real School Is



A class with no more than 6 living beings



A place bustling with opinions and discussions



A routine loaded with “real life” projects, discovery and exploration



A culture of respect, freedom and independence



An environment of fiddling, making, breaking and never giving up!



# What is “Real School”

## India's First Hybrid School

Customized learning path - Hyper personalized attention to each child



Small classroom -  
Teacher student ratio 1:5



Project-based learning, Hands  
on exploration with Home Kits  
& Materials



Trainer Quality - World  
class trainers from across  
the globe



Focus on Real world problems  
& Futuristic skills



Futuristic curriculum -  
Montessori, Steiner and IB  
inspired



Offline experience - Educational  
tours, Workshops and Make-a-thons

# Student Transformation At Real School

“**Real** world experience builds **real** character”

4 qualities we target for our student, your child



## Identity and Independence

Knows herself, makes own decisions

1

2



## Highest levels of Awareness

Both knowledge and understanding

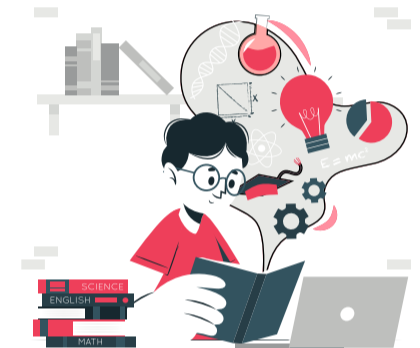


## Skill Development

Superior math and language skills

3

4



## Love for learning

Foundation for future

Situation	Behaviour	
	Real Student	Traditional Student
Self Esteem	Self- made, Highly independent	Seeks validation through score or praise
Academic orientation	Develops genuine interest, chases mastery	Follows curriculum
Service orientation	Willing to offer help	Values is not part of curriculum
Disappointment	Ability to rationalize and understand other's perspective	Inability to regulate emotions during disagreement
When left to themselves	Doesn't get bored, can work with himself	Needs continuous engagement
In new environment	Seeking discovery and adventure	Seeking safety first
With new people	Outspoken and forthcoming	Shy and conservative

# Our Philosophy

## What does Real School Stand for



Hyper personalize the classroom, customize the curriculum and make student the centre of education



Focus on skills of future - problem solving, learnability, fearless communication and unbound creativity

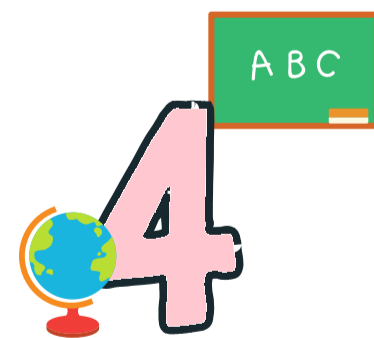


Imbibe hands-on learning, maker's culture and real-life application for a solid cognitive foundation.



Introduce the child to Global ideas, teachers and methods that will make them stand tall and relevant anywhere in the world

## Our Guiding Principles



### Student Outcomes We Focus On

Skill development  
Love for learning  
Identity and Independence  
High level of Awareness



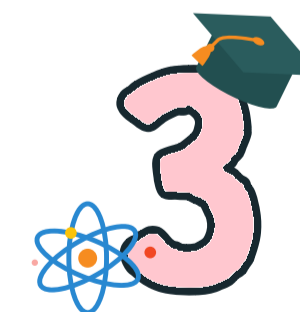
### Learning Experiences We Focus On

Personalized attention,  
Individual path  
Peer learning



### Primary Skills We Focus On

Literacy  
Math  
Creativity



### Social Outcomes We Focus On

Make strong bonds with teachers.  
Making friends.  
Connect to the world



### Pedagogy Focus

Hands on,  
Project based learning,  
Inquiry based learning

# Real School Signature – The 24X7 Curriculum

“School ends at 1, learning doesn't”

Realschool is the pioneer of the **24X7 learning approach**, which works on the principle of continuous and stress free learning beyond classroom using student's home environment



Learning is  
**continuous**



Learning becomes  
**fun**



Learning is  
**through life experiences**



# Real School Signature – The 24X7 Curriculum

M

T

W

T

F

WEEK 1

**Little hands Big work :**

- 1. Making dough balls for rolling chapatis
- 2. Clasp clothes pegs on clothes put out for drying

**Let's pack a backpack :**

- 1. Opening and closing bags with Velcro fastenings
- 2. Touch and feel rough and smooth texture objects e.g. scotch brite pad, nail file, kitchen shelf, the mouth of a spoon

**Helping Hands :**

- 1. Transferring grains/lentils from glass into bowls – parents can give the glass of grains to the child and tell him we are going to cook these today can you put them in a bowl and give it to me.
- 2. Children can be given a few bottles with lids undone. They can screw the lids and put the bottles back

**Organized Me :**

- 1. Arranging their pencils according to the length
- 2. Go outside and identify if it's day or night
- 3. Try to button their shorts or skirt with a single big button

**Waterworks :**

- 1. To pour themselves a glass of water from a child sized pitcher when thirsty.
- 2. Wipe wet kitchen counter

WEEK 2

**Sweet,Sour & Savoury :**

- 1. Explore tastes at home
- 2. Wrap a thread/yarn around a toy

**S is for sounds :**

- 1. Paint "a" sound with a cotton bud
- 2. Trace patterns in a suji tray

**Sensorial Me :**

- 1. Explore heavy and light at home
- 2. Explore some other objects with a mystery bag

**The Little Mathematician :**

- 1. Trace sand paper numerals 1-4
- 2. Trace the shapes and identify
- 3. Put back the objects in the kitchen

**My three little fingers :**

- 1. 1.Work with knobless cylinders
- 2. Trace sand paper numeral 1-6

\*curriculum is for age group 3 to 4 years



# Pre-Primary Program

“The foundation of everything after”

## Program Details

The seeds of brain, language and character development are sown at 3 to 6 years of age. Real School Pre-primary program takes special care to create a solid foundation for your young one.

Ages : **3-6**

Curriculum : **Montessori**

Material : **Montessori Home kit**

Online class hours : **400-500**

Offline contact hours : **150**

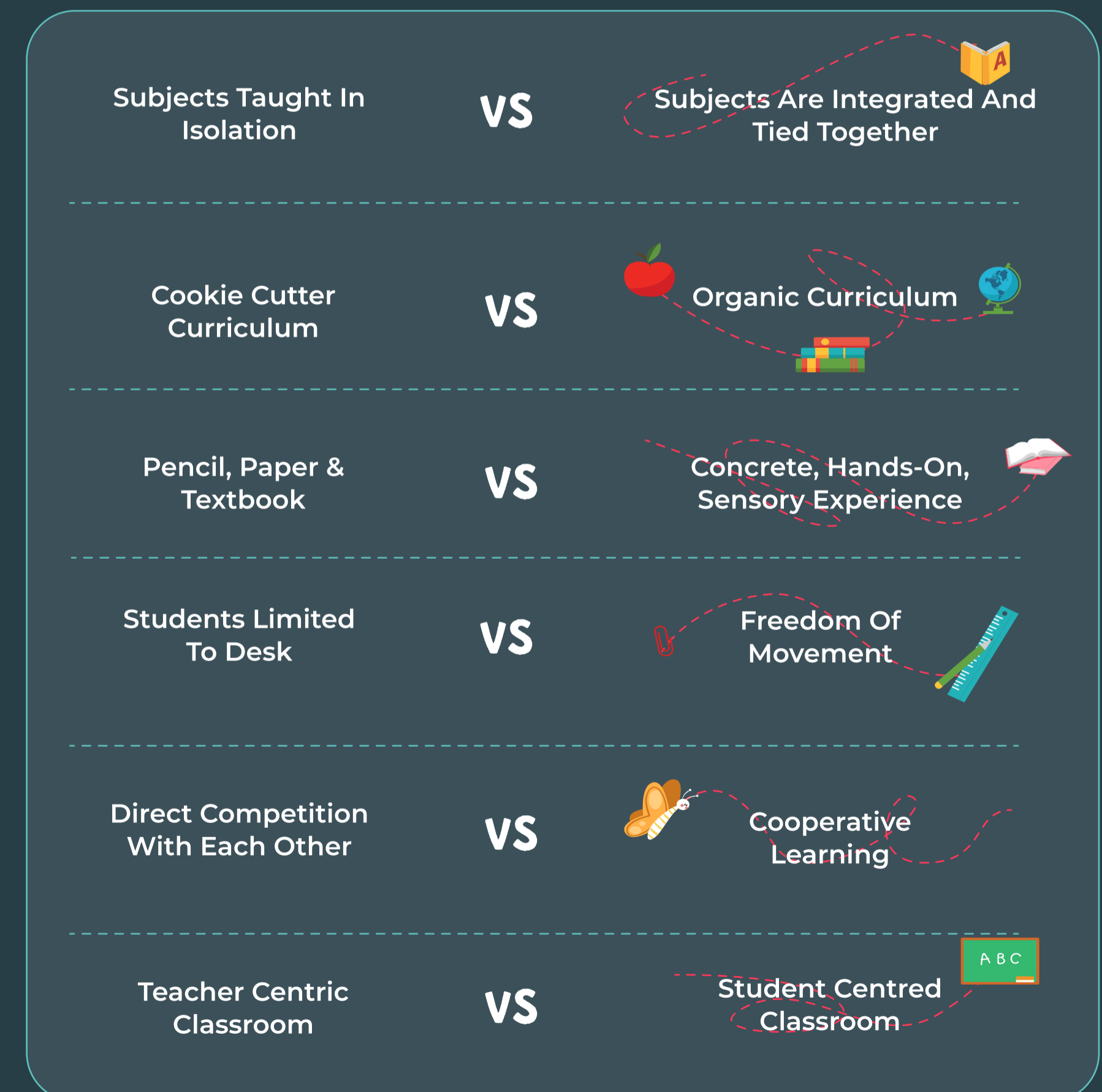
Class strength : **5**

Annual fees : **Rs 90000 - 1,10,000**

## About Montessori

Maria Montessori is the pioneer in the development of early childhood education. Montessori Method developed by Dr Maria nurtures order, coordination, concentration, and independence in children from the moment they enter the classroom. This is the only Curriculum that has evolved through scientific evidence and research .

## What differentiates Montessori from Traditional Education



# Pre-Primary Program

## Child Development Goals

- Developing habits of initiative and persistence through exploration
- Nurturing Curiosity by encouraging children to question the why and how
- Promoting joy of discovery through self-directed work  
Fostering concentration
- Provide opportunity for refinement of senses and skills
- Fostering inner security and sense of order in the child
- Cultivate appreciation of the various art forms
- Developing a positive attitude towards school and learning



## Curriculum

<b>Practical Life Curriculum</b>	Fine Motor Development, Life Skills, Care Of Self, Care Of Environment, Grace And Courtesy, Control Of Voluntary Movement, Gross Motor Skills, Developing Will And Dignity Of Labour
<b>Sensorial Curriculum</b>	Visual Disrimination, Tactile Sense, Auditory Sense, Olfactory Sense, Gustatory Senses, Sensorial Pairing, Sorting And Grading
<b>Math</b>	0-10 Counting, Decimal , Linear Counting , Addition, Subtraction, Multiplication, Division
<b>Language Curriculum</b>	Pre Reading Skills, Cursive Letter, Sound Recognition And Phoneme Awareness, Writing Skill, Vocabulary Enrichment, Function Of Words, Sentence Structure, Syntax, Sentence Analysis, Creative Writing And Sequencing , Word Study
<b>Zoology</b>	Land, Air And Water, Living /Non Living, Plants/ Animals, Vertebrate/Invertebrate, Animal Classification, Distinct Features, Parts Of Animals - Fish, Amphibian, Reptile, Bird, And Mammal, Life Cycle Of Turkey/Frog/Butterfly
<b>Botany</b>	Living /Non Living, Plants/ Animals, Parts Of Tree/Plant/Leaf/Flower/Fruit, Types And Shapes Of Leaves, Life Cycle Apple/Pumpkin, Germination
<b>Geography</b>	Land, Air & Water ,Land & Water Forms, Sandpaper And Coloured Globe, Continents Map , World Map, Individual Continents Map, India Map, Flag Work , Capitals ,
<b>Science</b>	Sink And Float (Buoyancy), Magnetism, Solid, Liquid & Gas, Weather
<b>Art &amp; Music Movement Curriculum</b>	Art Study Of Different Art Forms/ Artists, Themed Art Project, Using Natural & Sustainable Materials, Fine Motor, Gross Motor, Auditory Discrimination, And Self-Expression Skills
<b>Physical Education</b>	Balance, Emotional Regulation, Hand Eye Coordination, Gross Motor Development, Control Of Voluntary Movement
<b>Culture &amp; History</b>	Understanding The Culture – Food, Houses, Clothes, Festivals Across Continents And Countries, The World And Their Place In It, Peace Education, Understanding How Time Progresses – Day, Months And Year, Earth Rotation Around The Sun – One Year



**Pre-Primary Program**

**Environment and Material**

## Environment and Material

Environment of learning around you where we recreate a classroom in the house.



Student Routine : Online (10 hrs per week)

Routine for Week 1 :

- 2 hours of Practical Life,
- 3 hours of Sensorial,
- 2 hours of Sensorial
- And 1 hour each of Second language ( students get to choose the language) and Mathematics

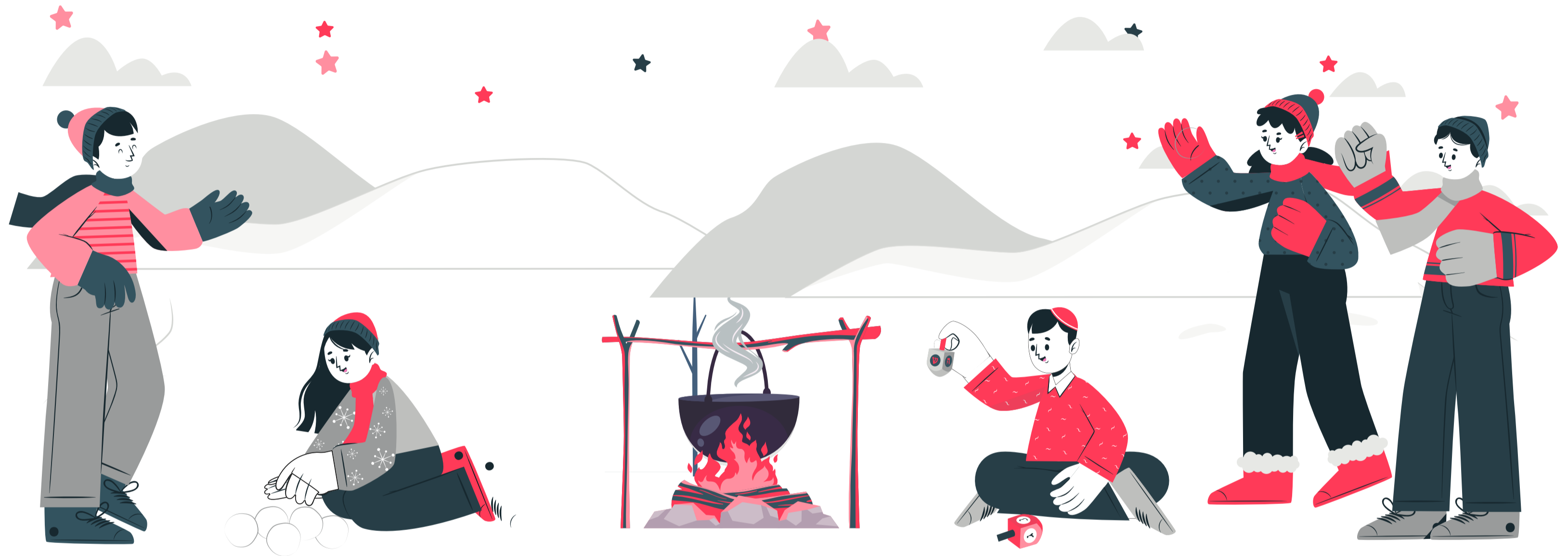
Week 1					
Time	Monday	Tuesday	Wednesday	Thursday	Friday
9 - 9.15 AM	Circle Time	Circle Time	Circle Time	Circle Time	Circle Time
9.15 - 9.45 AM	Practical Life	Second Language	Practical Life	Practical Life	Culture
9.45 - 10 AM	Break	Break	Break	Break	Break
10 - 10.30 AM	Culture	Sensorial	Sensorial	Sensorial	Practical Life
10.35 - 10.40 AM	Break	Break	Break	Break	Break
10.40 - 11 AM	Sensorial	Culture	Culture	Culture	Sensorial

Week 2					
Time	Monday	Tuesday	Wednesday	Thursday	Friday
9 - 9.15 AM	Circle Time	Circle Time	Circle Time	Circle Time	Circle Time
9.15 - 9.45 AM	Sensorial	Sensorial	Sensorial	Mathematics	Mathematics
9.45 - 10 AM	Break	Break	Break	Break	Break
10 - 10.30 AM	Practical Life	Culture	Practical Life	Foreign Language	Foreign Language
10.35 - 10.40 AM	Break	Break	Break	Break	Break
10.40 - 11 AM	Sensorial	Practical Life	Culture	Culture	Culture

Routine for Week 2 :

- The children will gradually progress towards Language and Mathematics whilst advancing in all other areas.
- The coverage will include :
  - 2.5 hours of Sensorial
  - 2.5 hours of Culture
  - 2 hours of Practical Life
  - 1 hour each Mathematics and Language
  - 1 hour of Music and Movement

## Student Routine : Offline (15 hrs per month)



- |                    |                                 |                          |                        |
|--------------------|---------------------------------|--------------------------|------------------------|
| • Night Sky Gazing | • Visit To A Restaurant Kitchen | • Weaving Workshop       | • Science With Bubbles |
| • Lego Workshop    | • Recycling Workshop            | • Frisbee Fun            | • Family Paint Night   |
| • Art With Beads   | • Visit To A Farm/Supermarket   | • Mini Golf              | • Makers Camp - 3D Pen |
| • Yoga Workshop    | • Gardening Workshop            | • Storytelling Under The | • Chasing Fireflies    |
| • Origami Workshop | • Soccer Day                    | Stars                    | • Lego Evening         |
| • Baking Workshop  | • Decorating Masks With Block   | Star Gaze                | • Horse Riding         |
|                    | Printing                        | Visit To Goshala         |                        |

# Primary School

## Program Details

Ages : 7-12

Curriculum : International bachelorette,  
**Steiner**

Material : **Real School Maker's kit**

Online class hours : **400**

Offline contact hours : **150**

Class strength: **5**

## About IB curriculum and Steiner Board

Real School has adopted the educational philosophy of IB and the pedagogical principles of Steiner Education. IB curriculum which is underpinned by the creative Steiner pedagogy which inspires students' critical thinking, emotional intelligence and creativity. We follow a Project Based Learning approach where science, reading, and math come together in rigorous hands-on projects, where students have to engage, collaborate, debate with each other, where the focus is on the ability to do research and come up with their own ideas and theories.

At its heart, the IB curriculum aims to provide sound preparation for life in the 21st Century, and a 'passport to the future' for students seeking entrance to universities and colleges overseas

“

**RealSchool kids are 2 years ahead of  
a regular kid**

”



## Child Development goals

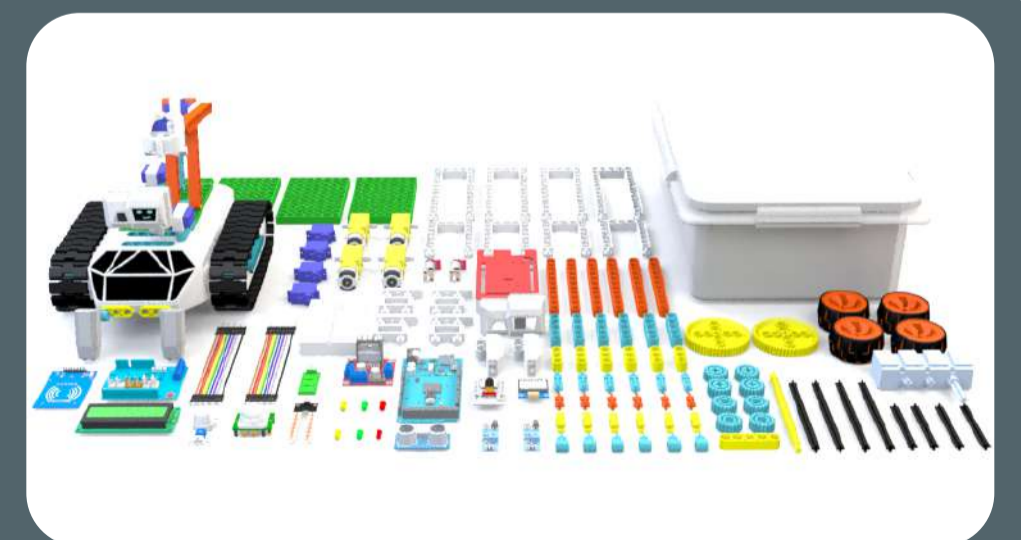
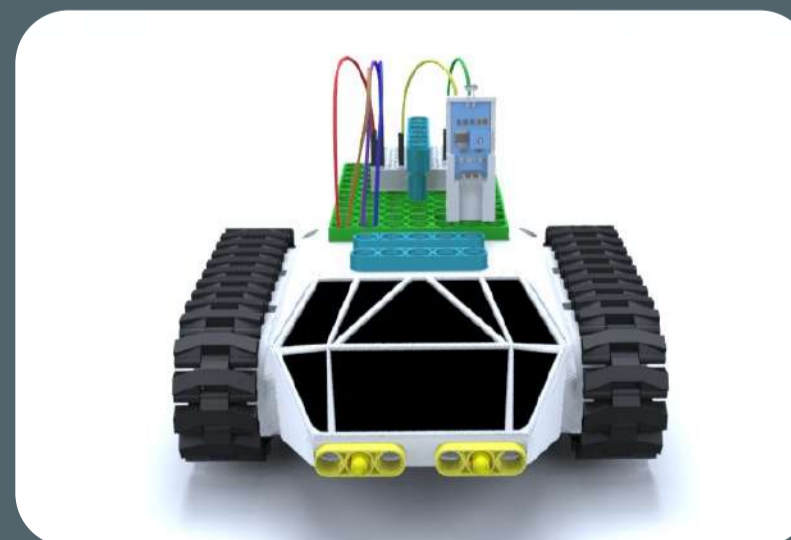
- Superior language ability for high level of comprehension
- Increased Logical ability for generating creative ideas and coming up with effective solutions rather than acting solely on emotions.
- Emphasis on strong Math fundamentals which is the core of all logical stream
- General & Social Cultural awareness
- Scientific enquiry and ability to reason scientifically thus developing the ability to think and act
- Research and learnability for being a life long learner

# Primary School

## Curriculum

Great lessons	Specific studies
Universe and earth	Astronomy, meteorology, chemistry, physics, geology, geography
Life	Biology, botanics, environment, evolution of life, zoology
Us	History, culture, social studies, scientific discoveries and inventions
Sensory world - I can touch, see and sense	How stuff works
Literacy	Reading, writing, linguistics, language structures, literature
Communication	Persuasive, Instructive, Descriptive, Artistic - written,
Math and Logic	Mathematics, origin of numbers, systems of numbers, geometry, estimation, logic spoken and multimedia
Project & Practicals	Design thinking, Scientific Enquiry

### Environment and Material :



# Student Routine : Online

## Routine for the Week :

2 hours of Social Studies, 3 hours of Socratic Discussion, Daily Culture and Music sessions and 1 hour each of Second language ( students get to choose the language) and Mathematics

Time	Monday	Tuesday	Wednesday	Thursday	Friday
9 - 9.15 AM	Headlines Time	Socratic Discussion	Socratic Discussion	Collaborative Storytelling	History
9.15 - 9.45 AM	Socratic Discussion	Social Studies	History	Mathematics	Mathematics
9.45 - 10 AM	Break	Break	Break	Break	Break
10 - 10.30 AM	Reading Club	Culture	Practical Life	Foreign Language	English Language
10.35 - 10.40 AM	Break	Break	Break	Break	Break
10.40 - 11 AM	Culture	Second Language	Culture	Career Talk	Culture
11 - 11.40 AM	Mathematics	Mathematics	Mathematics	Mathematics	Mathematics
11.40 - 12.15 PM	Music	Music	Music	Music	Music
1 - 1.40 PM	Social Studies	Career Talk	Foreign Language	Observation Time	Social Studies
1.40 - 2 2.20 PM	History	Practical Life	Culture	Second Language	Observation Time
2.20 - 3.10 PM	English Language	Collaborative Storytelling	Socratic Discussion	Social Studies	Collaborative Storytelling



## Student Routine : Offline

- Nature Trail With Birdwatching
- Animation Using Clay And Lighting
- Cartography And Local Map Mapping
- Forest Camping And Pathfinding
- United Nations Conference Simulation
- Single-Day Business Venture
- Performing Arts Workshop
- Team Building And Cooperative Workshop
- Historical Site Visit
- Strategy Board Games
- Makeathon - Junkcreate
- Sustainable Furniture Design
- Hydroponics
- Open Field Aerodynamic
- Machines And Robotics
- Let's Go Camping
- Draft A Family Constitution
- Write A Letter With A Quill
- Pen
- Make A Timeline Of An
- Influential Person
- Crockery Baking And
- Painting Workshop
- A Day With The Framers



## Meet the team behind the dream



**Rohit**

**Co- Founder**

Before your school, Rohit has had 2 successful education startup exist in K-12 segment. I thought leader, Rohit is BTech from IIT Bombay, and has kickstarted several trends In Indian education industry in the 15 years, real school is the best version of his experiences, successes and hard learned lessons.



**Niraj**

**Co- Founder**

Before Real School, Niraj ran a company which was into industrial automation. He has designed everything from a jet nozzle to a cargo ship. This hard core technocrat holds a management degree from IIM Indore.



**Anirudh**

**Co- Founder**

Anirudh has been associated with product in content development in K 12 space for a decade. He has a vast experience in curriculum design, product and content design. A mechanical engineer from IIT Bombay, he is passionate about early child development and child parent engagement.



**Atul**

**Course Head**

Atul Jain is an Experienced Educator with a demonstrated history of working in the e-learning industry. He is a strong education professional with a Master's Degree focused in Sociology from Delhi School of Economics preceded by a B. Tech from IIT Kanpur.



**Maathangi**

**Course Head**

As an HR Professional, over the years Maathangi has actively worked towards development and recognition of Human Capital. She is dedicated to transforming the way children access the world through the Power of Communication.



**Prerna**

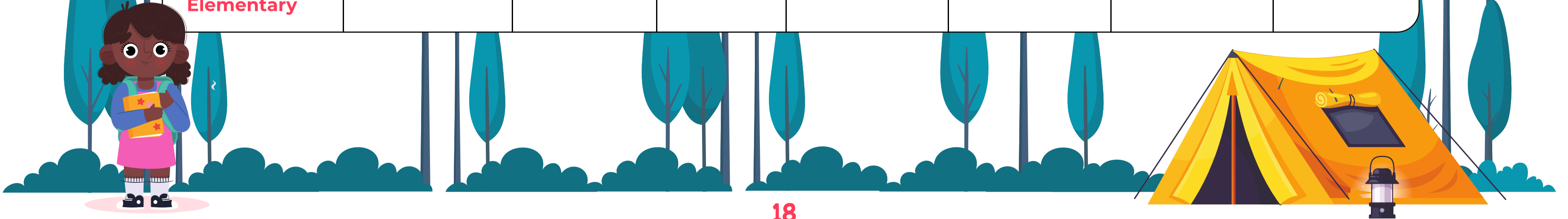
**Course Head**

A true Montessorian at heart, Teaching is not a job but a passion - A call to nurture and support our future - our children. I hold the AMI diploma for primary (2.5 - 6 years) and have been fortunate to have worked purely with authentic Montessori schools in the past. A parent to a seven-year-old, I truly believe in the school parent partnership to best meet the unique needs of each child.



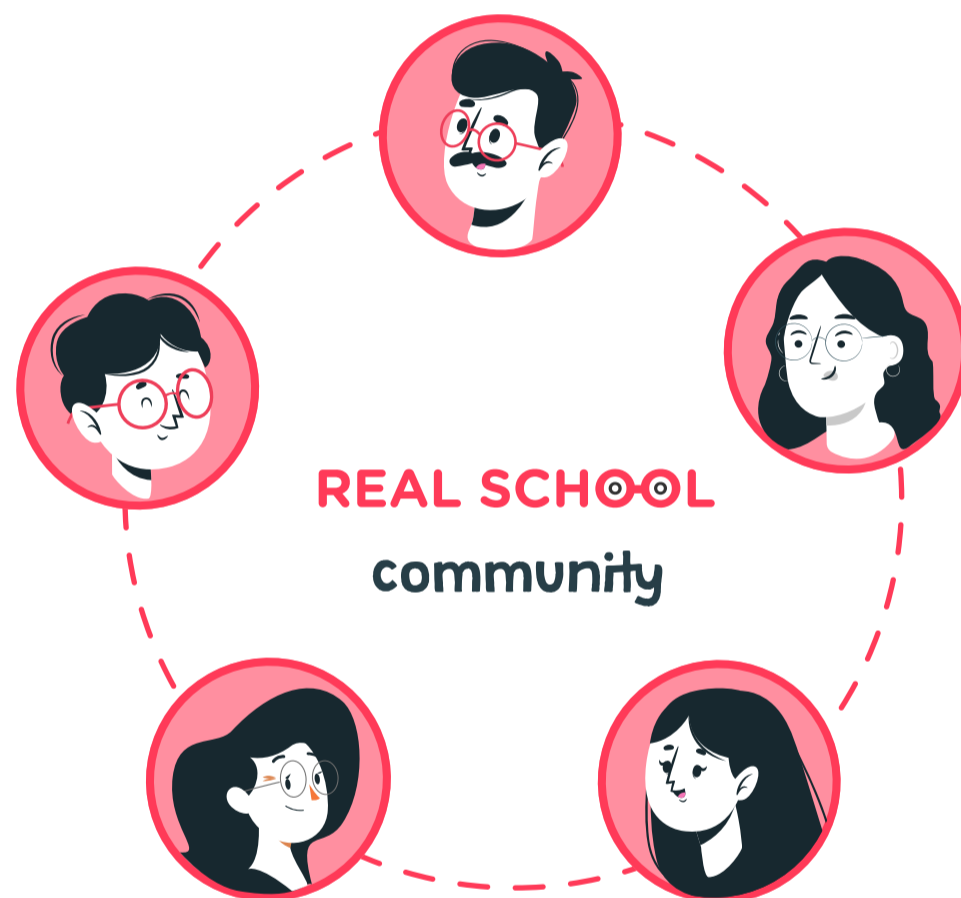
# Fee Structure

Programs	Age group	Weekly Virtual Tours	Monthly Local hours	Annual fee Hybrid	Annual fee Online	Quarterly fee Hybrid	Quarterly fee Hybrid
Montessori Toddler-Parent	14 Months - 3 years	10	15	114000	90000	28500	22500
Montessori Pre-Primary L1	3 - 4 years	10	15	114000	90000	28500	22500
Montessori Pre-Primary L2	5 - 6 years	15	15	154000	130000	38500	32500
Montessori Lower Elementary	6 - 8 years	15	15	154000	130000	38500	32500
Montessori Upper Elementary	8 - 12 years	20	24	206000	170000	51500	42500



# Admissions

Real school prides on its **parent community** and gives special importance to the invite only approach where most new admissions are recommended by existing parents. If you have an invite, we will simply handhold you through the process



## Reach us

[Email Us](#)

[Chat with us](#)

[Visit our website](#)

[Fill our Form](#)

## Get Invitation!

For getting an **invite** or knowing more about us,

**join our parent chapters** and make an informed decision.



## Visit a Real School!

You are **most welcome** to come unannounced and **meet our team**



## Contact

**Office Address** - F006, Art Guild house, Phoenix Market City, Kurla West, Mumbai. Maharashtra - 400070

